



IMMUNOLOGICAL SCIENCES

Product Data Sheet

AB-10701 Rabbit antibody to BDNF (precursor)

Unit size: 250 µg
Conc: 500 ug/ml

Description: Brain-derived neurotrophic factor precursor

Background: **FUNCTION:** Promotes the survival of neuronal populations that are all located either in the central nervous system or directly connected to it. Major regulator of synaptic transmission and plasticity at adult synapses in many regions of the CNS. The versatility of BDNF is emphasized by its contribution to a range of adaptive neuronal responses including long-term potentiation (LTP), long-term depression (LTD), certain forms of short-term synaptic plasticity, as well as homeostatic regulation of intrinsic neuronal excitability.
SUBUNIT: Monomers and homodimers. Binds to NTRK2/TRKB.
SUBCELLULAR LOCATION: Secreted.

Host: NZ white rabbit

Clonality: Polyclonal

Isotype: IgG

Applications IHC, WB. A concentration of 1:10 – 100 µg/ml is recommended. The optimal dilution should be determined by the end user.

Specificity: Appears to be specific for precursor BDNF.

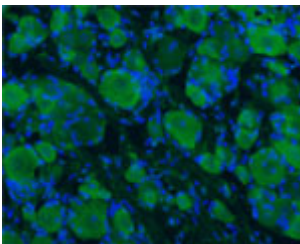
Spcs X-react: Rat, Mouse, Human (antigen homology ~96%)

Format Liquid, Reconstituted with 50% distilled water plus 50% glycerol. Centrifuge and remove any insoluble material.

Storage Maintain the liquid antibodies frozen at -20°C for long term storage and refrigerated at 2-8°C for a shorter term. Avoid freeze and thaw cycles.

Expiry Date 12 months.

Shipping This item will be shipped to you at ambient temperature in a liquid form.



IF on rat DRG at 1 : 500 dilution using Rabbit antibody to rat, mouse , human **BDNF** (BDNF, Brain-derived neurotrophic factor - precursor): whole serum

For Research use only; not for use as a diagnostic
IMMUNOLOGICAL SCIENCES

Web-site: www.immunologicalsciences.com - E-Mail: info@immunologicalsciences.com